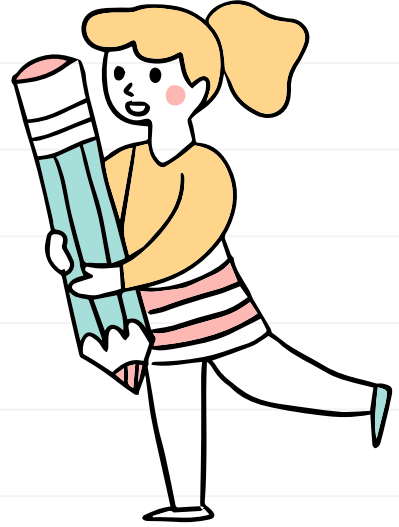
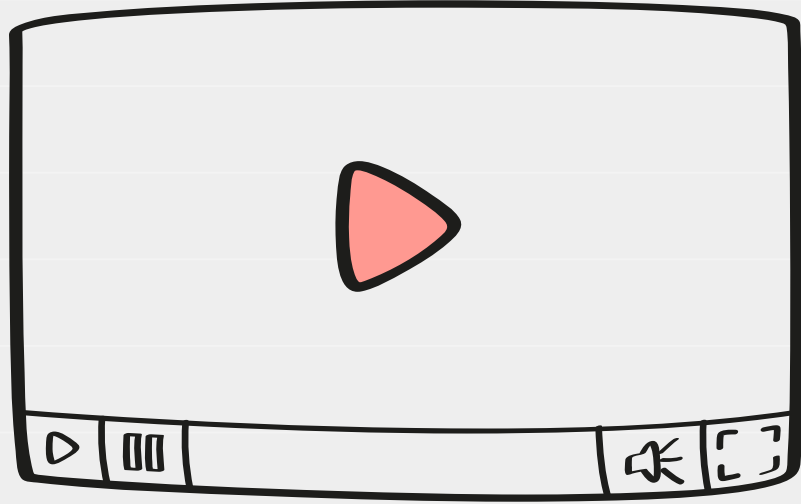




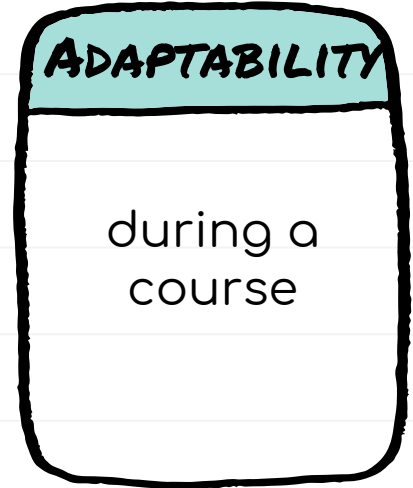
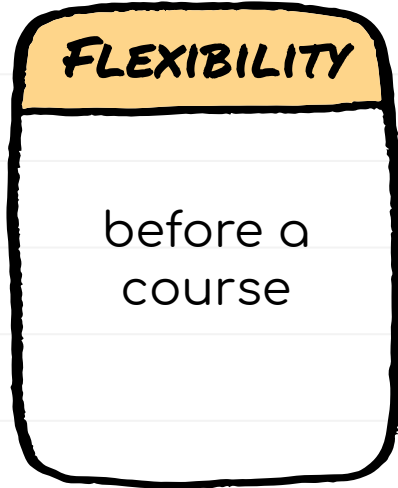
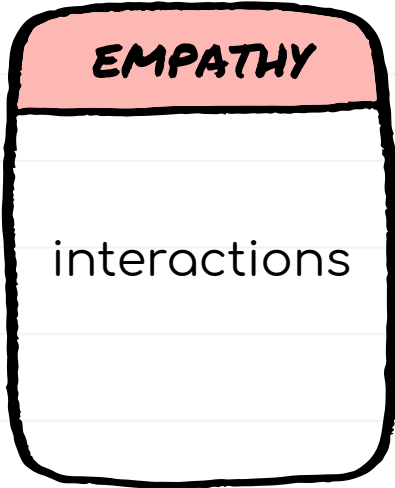
WHAT DO WE PRIORITIZE?

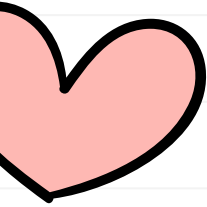


PEDAGOGY > TECH



THREE CORE PRINCIPLES





**"EMPATHY IS IN
EVERYONE'S SCOPE OF
PRACTICE."**

—Karen Costa





OWI PRINCIPLE #1:

**"...SHOULD ADHERE TO THE
NEED FOR INCLUSIVITY AND
ACCESSIBILITY AT ALL LEVELS
OF PEDAGOGY"**

"Cameras must be on!"

NO

NOPE

"Get better Wi-Fi or go to a coffee shop"

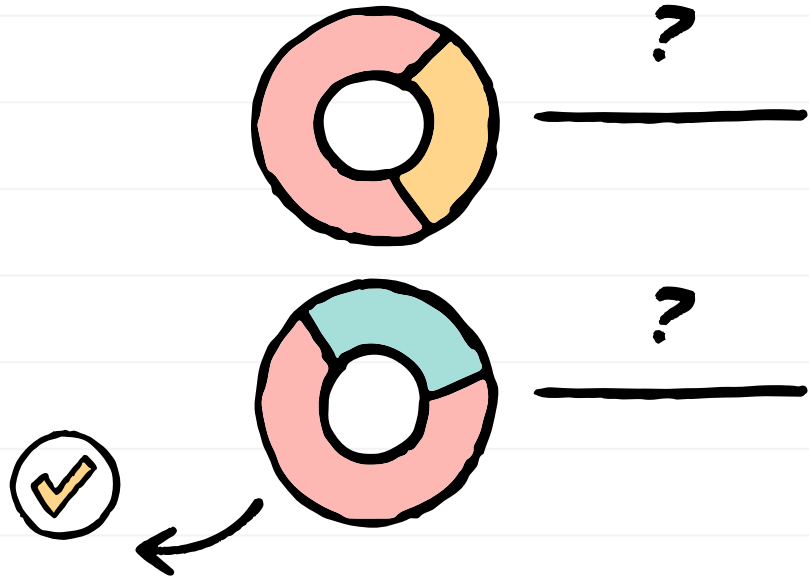


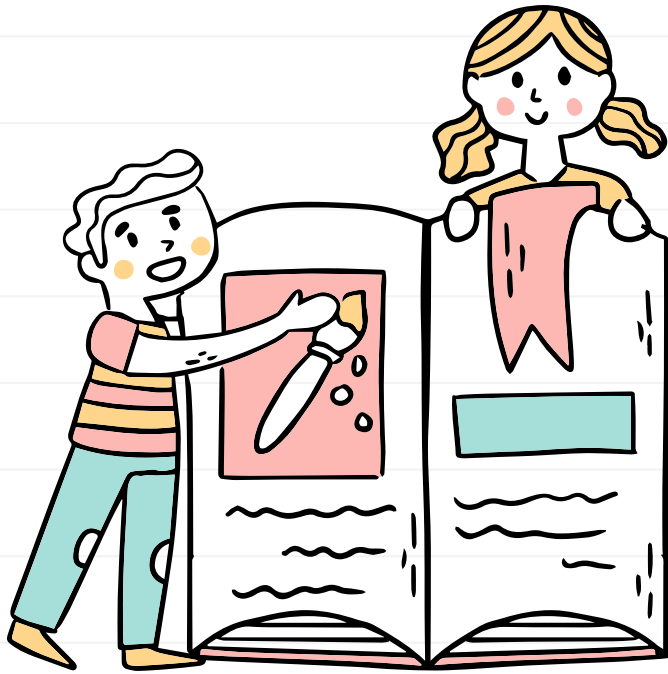
GOD NO



"I don't accept late work. Period."

BALANCING STRUCTURE WITH FLEXIBILITY





FLEXIBILITY
STILL
PRIORITIZES
LEARNING

FLEXIBILITY

01



labor-based
grading

02



options for
projects

03



delivery
modes

04

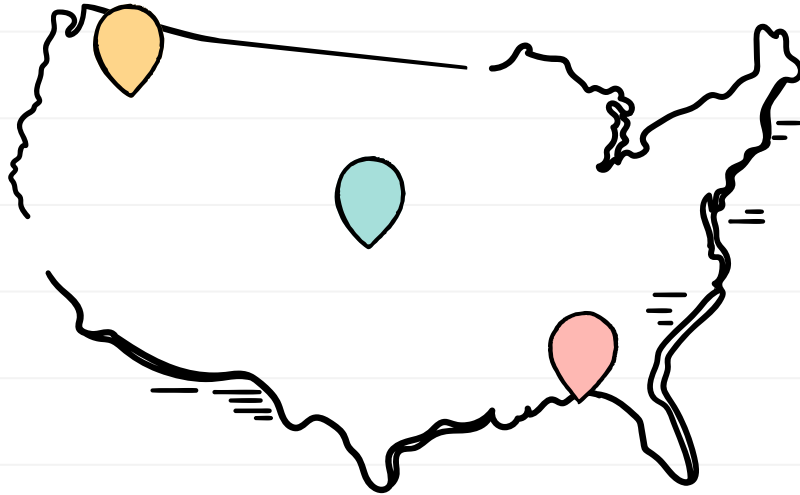





forgiving
policies

**COMMUNICATE
GOALS**

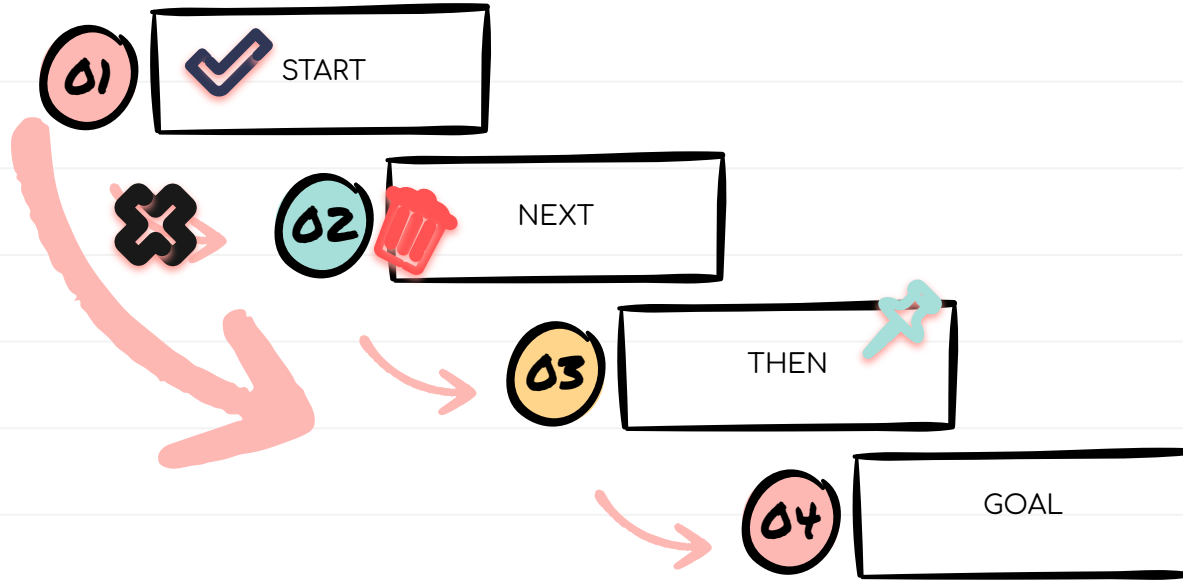


ADAPTABILITY

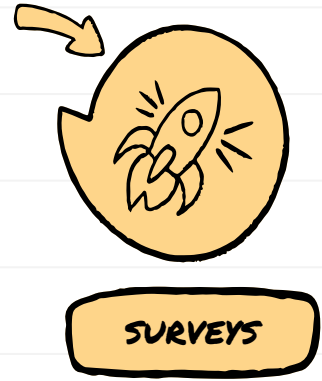
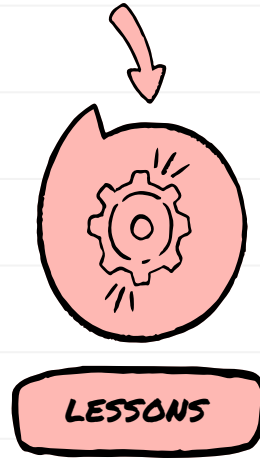
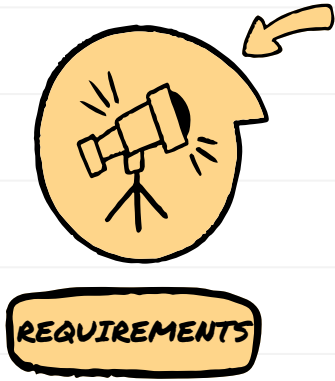


-  **STUDENT 1**
unique challenges
-  **STUDENT 2**
unique challenges
-  **STUDENT 3**
unique challenges

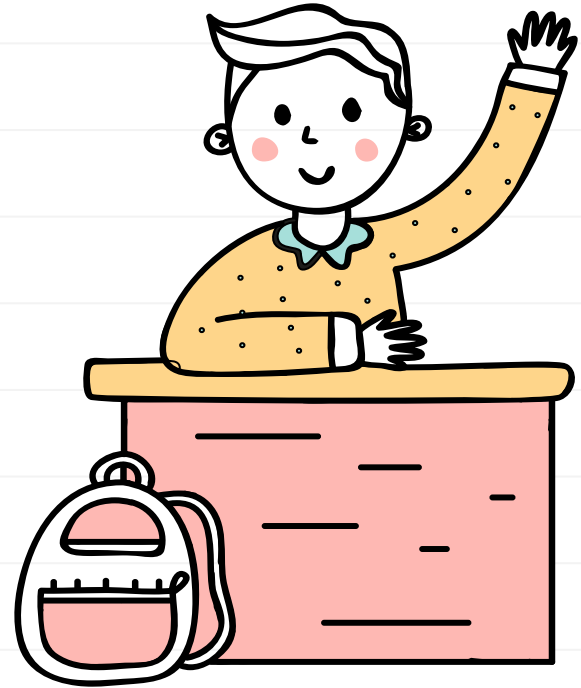
ADAPTABILITY = CHANGING PLANS



ADAPTABILITY



**WHAT'S IT
LOOK
LIKE?**



THREE CORE PRINCIPLES

FLEXIBILITY

DESIGN

grading contracts
modality options
choose your own

THREE CORE PRINCIPLES

ADAPTABILITY

FEEDBACK

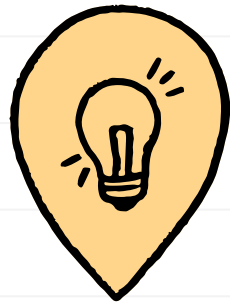
anonymous
surveys
revision
voting

THREE CORE PRINCIPLES

EMPATHY

COMMUNICATION

survey
check-ins
"scope of practice"



**TRY,
FAIL,
AND LEARN**

GOALS

BE FLEXIBLE

BE ADAPTABLE

BE EMPATHETIC